

EPSON Product Support Bulletin

Date:	07/01/2002	Originator:	RR
PSB #:	PSB.2002.06.001A	Authorization:	<i>RR</i>
Reference:	EPSON Stylus Pro 7600/9600 Reference Guide	Total Pages:	4
Product(s):	EPSON Stylus Pro 7600/9600 Series		
Subject:	No Margin and Borderless Printing		

This bulletin is provided for assistance on how to create and print a borderless document on the EPSON Stylus Pro 7600 and EPSON Stylus Pro 7600 Inkjet printers. There are two aspects to this new feature: "No Margin", which allows the image to bleed off the left and right side of the page on sheet or roll media, and "Borderless" which is a true 4 sided page using "No Margin" and Auto Cut on roll media only.

Important Information regarding Borderless Printing:

- No Margin and Borderless printing are functions of the printer's hardware in combination with the EPSON standard software drivers for MAC and PC. The EPSON Fiery Spark Professional 2.01 PostScript RIP currently does not support the No Margin or Borderless printing feature. If you are using a non-Epson RIP please contact that manufacturer directly regarding whether this feature is implemented and it's use.
- No margin and borderless printing are implemented for specific media widths only because of the position of the ink pads installed in the printer. If the No Margins option in the software driver is not selectable (grayed-out), this means the feature is not available for the media width specified. The table below details the supported media widths:

EPSON Stylus Pro 7600 (24" width maximum)													
EPSON Stylus Pro 9600 (44" width maximum)													
8"	210mm (8.27")	10"	300mm (11.81")	12"	14"	400mm (15.75")	16"	500mm (19.69")	20"	600mm (23.62")	24"	36"	44"

NOTE: Attempting to print on media other than the widths listed above will result in a Reload Paper error message on the printers control panel. EPSON 22" media is not supported for No margin or borderless printing.

- Borderless printing requires the use roll media and the printer's internal cutter. When choosing the following EPSON Genuine roll medias in the EPSON driver, Auto Cut is automatically disabled (regardless of control panel or driver selection) to prevent damage to the cutter. Damage may be due to: heavy thickness, material type, or coating and can result in early failure of the cutter resulting in incomplete or ragged cuts. (Cutter Blade re-order#: C12C815241). No margin printing is the only function supported for these media types when using the appropriate widths.

Smooth Fine Art Paper	Textured Fine Art Paper	Canvas	Backlight Film
Heavyweight Polyester Banner	Adhesive Vinyl	Dupont/EPSON Semi-Gloss Proofing Paper	In general: thick media or media's with coatings which may damage the blade

- Cut sheet media supports No Margin printing only (Left/Right).
- The originating document needs to be created (or resized) by at least 1/4" (.25 inches) over the desired finished dimensions. For No Margin printing add 1/4" to just the width. For Borderless printing add 1/4" to the width and height.

6. When loading paper, ensure that the right edge of the paper lines up to the left edge of the vertical alignment holes on the lower paper guide of the printer. Loading the paper to the right of the holes may cause a slight margin on the edge of the page.

Hardware settings/adjustments for Borderless Printing:

1. Ensure the printer is in a Ready mode and press the SelectType button. The LCD display will show Printer Setup.
2. Press the SelectType button once more to enter the Printer Setup Menu.
3. Press the down button until the display shows No Margin. Press the SelectType button to enter the No Margin menu.
4. Press the up or down buttons to select one of the three types of No Margin printing options.

NOTE: When not selecting No Margin in the Epson driver or using a Fiery Spark or a 3rd party RIP these settings do not make any difference to “normal” printing.

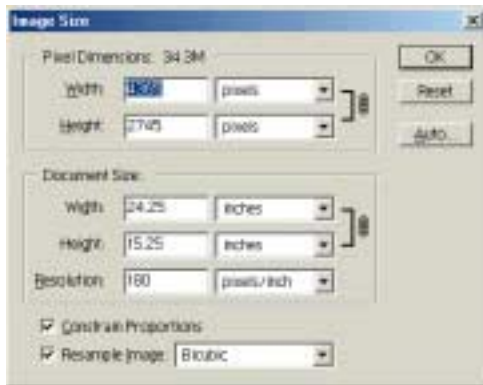
- L/R only - Enables no margin on the left and right side of the page only.
 - i. Select this mode for use with cut sheet media, when using the optional Auto Take-up reel (SP9600 only) and media which does not support the internal cutter. The top and bottom edges will require manual trimming.
 - 1 CUT – Media saver mode:
 - i. Each image is butted up against the next, bottom to top and 1 cut separates them. In this mode the Cut Adjust described (item 6) is extremely important. An inaccurate cut may leave some printed data that will show on one of the prints. Media with a high curl memory should not use this mode as the cut may be slightly inaccurate regardless of adjustment. On a single image job the next job will still have a leading edge (which will be cut automatically), as the printer cannot print at the very edge of the media.
 - 2 CUT – Best Quality Mode:
 - i. A small amount of media is fed between each print. The printer will cut the border of each print independently with no overlap of image data.
 - Whether using the 1 Cut or 2 Cut method, there will always be a small amount of media wasted on the leading edge of the print job. This is to allow media to be dropped out of the printer when the leading edge is cut since the printer cannot print on the leading edge of the media.
5. Once you've selected one of the 3 methods above, press the Enter button to set the value (designated by an asterisks *).
 6. Press the Paper Source button to move back to the Printer Setup menu and press the down button to move to Cut Adj.
 7. Press the SelectType button once to enter the Cut Adj. mode and press Enter to execute the adjustment.
 8. The printer will print an alignment pattern (labeled 1-17) and then cut down the center of the pattern (Light Black and Magenta).
 9. Looking at the cut pattern, you want to select the value (using the up or down button) that has the cut closest to the center mark and press the Enter button to set that value (as noted by an asterisks*). This adjustment may be very useful when using the 1 cut method so that no data from one image imposes on the other print.
 10. Press the Paper Source button until the printer is back to a Ready mode.

Application Example:

The following example demonstrates how to use the standard Epson software driver to setup and print a 24x15 inch 4-sided borderless image from Adobe Photoshop 6.01.

Step 1) Launch Adobe Photoshop and open the image you wish to print.

Step 2) Select Image Size and increase the width and height by at least 0.25 inches to create a “bleed”. In this example the original document was 24x15, and is being scaled to 24.25” x 15.25.



(same screen on PC and Mac)

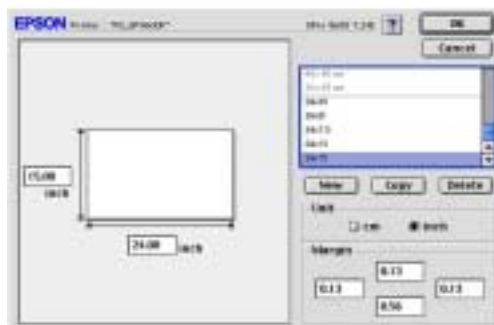
Step 3) Once the image size is set, go to File and Print Options. Select Page Setup, then Properties to access the printer driver.

Step 4) Once at the printer Properties, Select the Paper tab and under Paper size select “User Defined” and set the page size to the finished borderless size you want (taking into consideration the supported widths). The following window will pop up

NOTE: On the MAC platform, the margin settings are disregarded when performing no margin or borderless printing.



(PC)

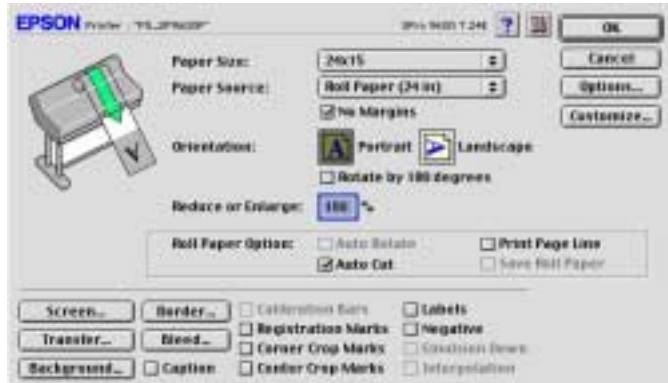


(Mac)

Step 5) Once the custom page size is created click OK and ensure that both No Margins and Auto Cut boxes have check marks. Also ensure that the printers control panel is also set to Roll Cutter On.

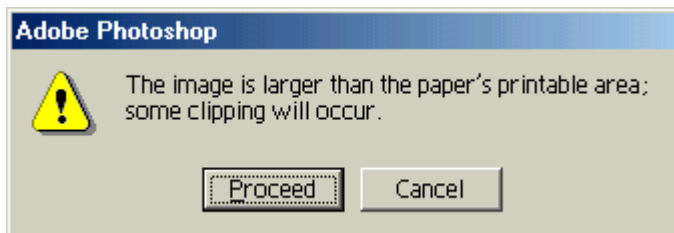


(PC)



(Mac)

Step 6) Select OK to get back to the Print Options menu and verify that the custom page size is correct in the Print Options window. If not, go back to page setup and verify the custom page size selection. Once this is done, select Print, you will likely see the following message:



Step 7) Click Proceed and Print to begin imaging the document.