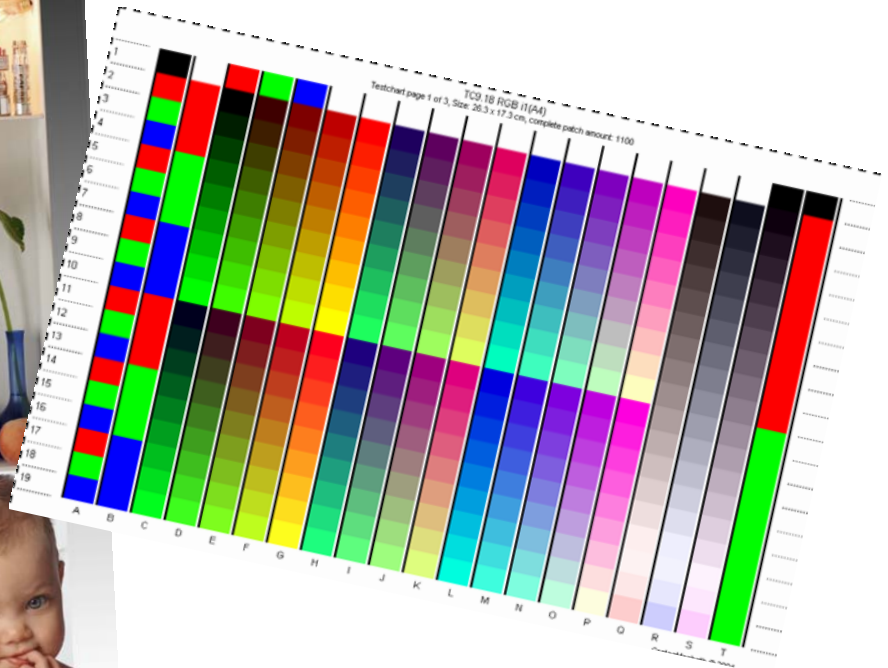


Custom ICC Color Printer Profiles from LOGIX, INC.



LOGIX has many years of experience creating custom output profiles for our customers. We are now offering this service to those interested in improving the color accuracy of their printers.

For just \$99 we will build a custom ICC printer profile that is specific to your printer, media, and workflow.

Call 1-800-465-6449 to learn more.

www.logix-usa.com

LOGIX ORDER FORM

Complete this form and mail with your printed targets to:

LOGIX, INC.

ATTN: Custom Printer Profiles

11900 Farmington Rd.

Livonia, MI 48150

Name _____

Company _____

Address: _____

City _____ State _____ Zip _____

Phone _____ FAX _____

Email Address: _____

**NOTE: Your new ICC color printer profile and installation instructions
will be sent to the above email address within 3 business days of receipt of your order.**

Payment Method - Check One:

VISA MasterCard Amer. Express Check PO

Card, Check, or PO# _____ Expires ___/___

Cardholder Name (if different) _____

Address _____

City _____ State _____ Zip _____

Printer Make & Model: _____

Media Type: _____ Inkset: _____

Other Description: _____

Computer: WinXP Win2000 Macintosh Other _____

I am printing from: Photoshop Quark InDesign Other _____

If you have any questions, please call LOGIX Tech Support at 1-800-465-6449

Printing the Color Targets

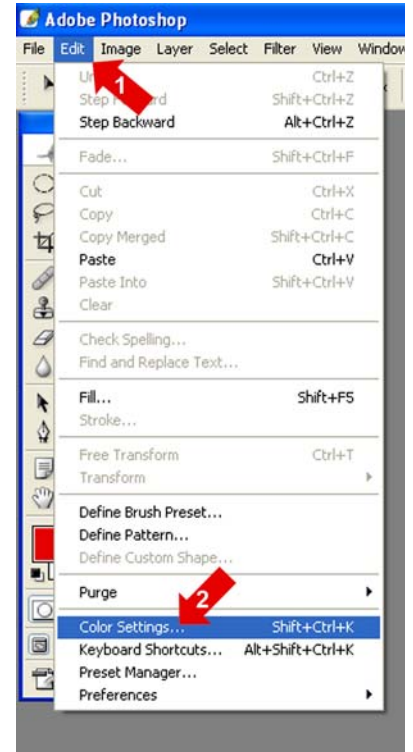
If you haven't already done so, DOWNLOAD the 3 color target files from <http://www.logix-usa.com/BuildICCProfiles.html>.

This workflow uses Photoshop to print the color targets. If you are on a Macintosh or are using another application, please contact LOGIX Tech Support for specific instructions at 1-800-465-6449.

NOTE: These targets DO NOT have a color working space assigned to them. It is very important that your application does not assign a working color space to these images when you open them.

Before opening the color target images, go to the Photoshop **Edit > Color Settings** dialog box.

1. Select **Edit** from the top menu in Photoshop.
2. Select **Color Settings. . .** from the **Edit** drop-down menu.



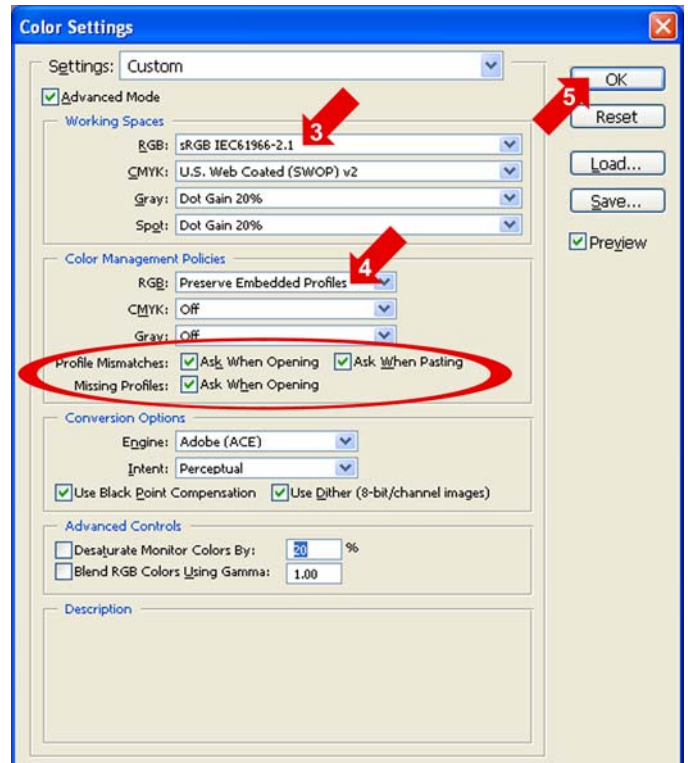
This is the Color Settings dialog box. Be sure to check the Advanced Mode box.

3. RGB Working Space.

Popular working spaces include sRGB IEC61966-2.1, Adobe RGB (1998) and ColorMatch RGB. For this procedure, it **doesn't matter** which one you choose at this time.

4. Color Management Policies.

Make sure Color Management Policies for RGB are set to either **Preserve Embedded Profiles** or **Convert to Working RGB**. DO NOT set to **OFF**.



NOTE: Be sure to check the "Ask When Opening" boxes as shown.

5. Click **OK** to close the Color Settings dialog box.

NEXT >

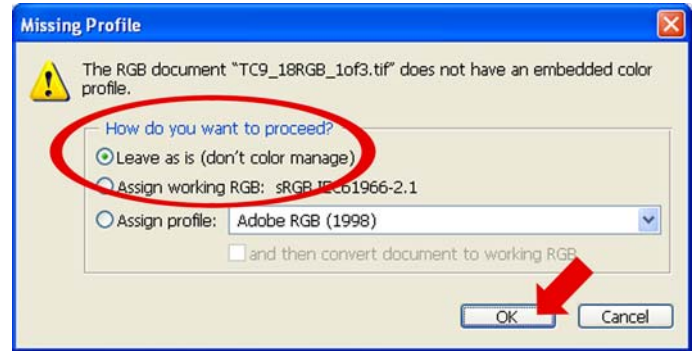
Open the first color target file (File > Open)

When opening the image, Photoshop will ask you "How do you want to proceed?" as shown.

Select "Leave as is (don't color manage)".

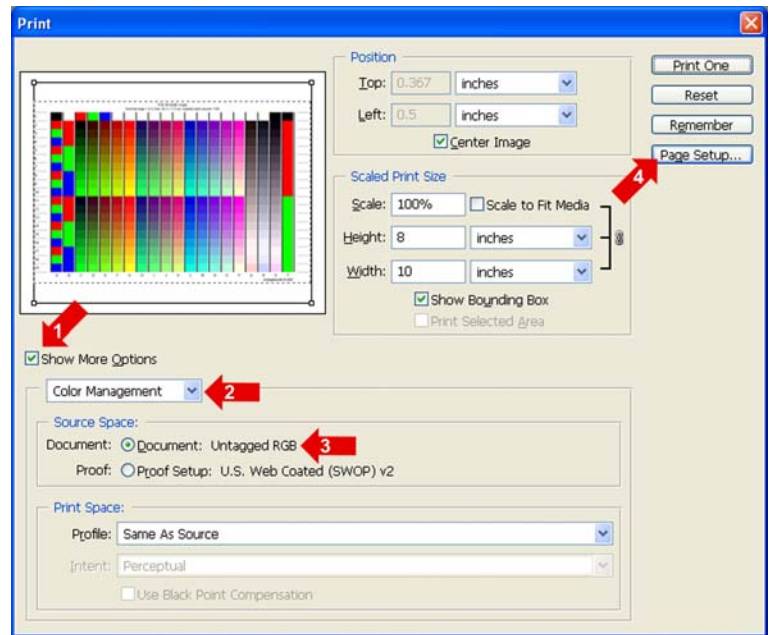
NOTE: If you don't see this dialog box, call the LOGIX Support Center before printing the targets.

Click **OK**. Open the remaining 2 target files and select "Leave as is (don't color manage)" for each.



Select the File > Print with Preview option from the Photoshop menu.

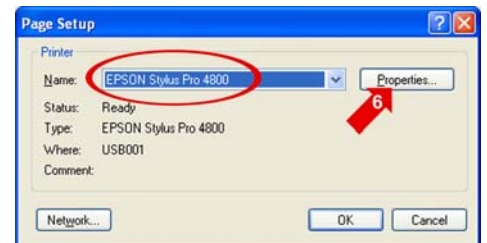
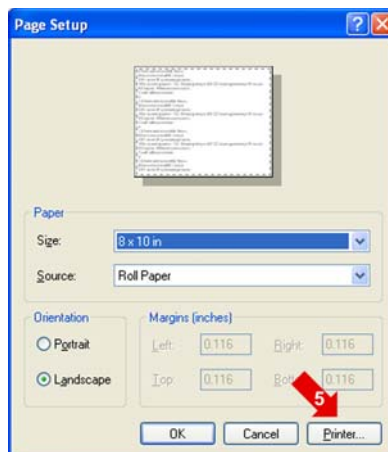
1. Be sure "Show More Options" is checked.
2. Be sure the drop-down box under Show More Options is set to "Color Management".
3. Under Source Space, be sure it displays "Untagged RGB" after the Document radio button under Source Space.
4. Click on **Page Setup**.



Select the printer you want to profile.

5. Click on the **Printer** button.
6. Click on the **Properties** button.

NOTE: Be sure you have the correct printer selected.



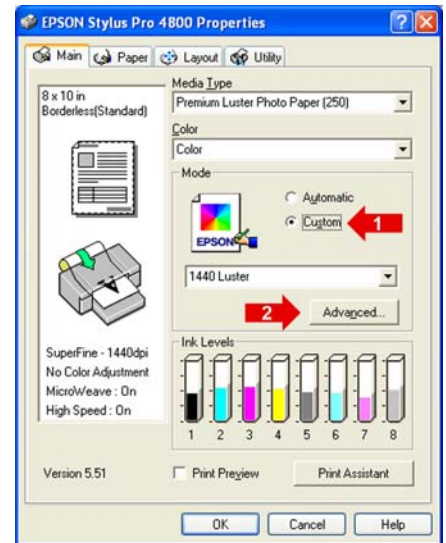
NEXT >

TURN OFF Color Management in the Print Driver.

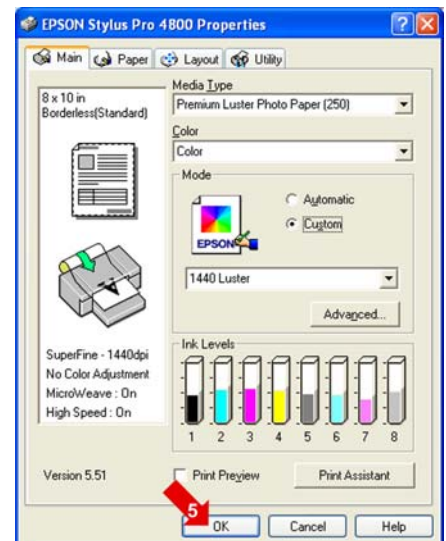
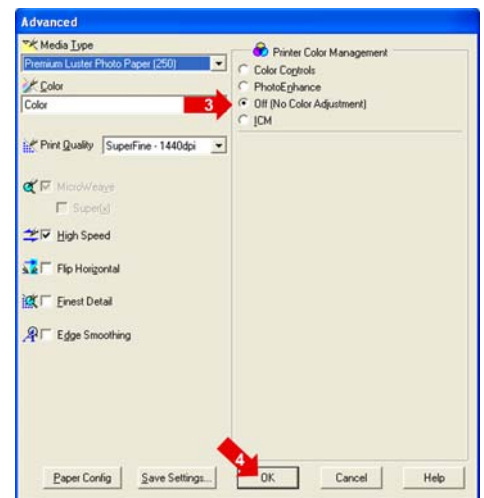
NOTE: This example is for an EPSON printer. For other printers, check your documentation regarding disabling the color controls in your print driver. For Windows XP go to **Start > Control Panel > Printers & Faxes**. For Windows 2000, go to **Start > Settings > Printers**.

Right-click on your printer and left-click on Printing Preferences.

1. Under the “**Main**” tab, select the **Custom** mode.
2. Click on the **Advanced** button.
3. Click on the **OFF (No Color Adjustment)** radio button.
4. Click on the **OK** button to return to the Main menu.



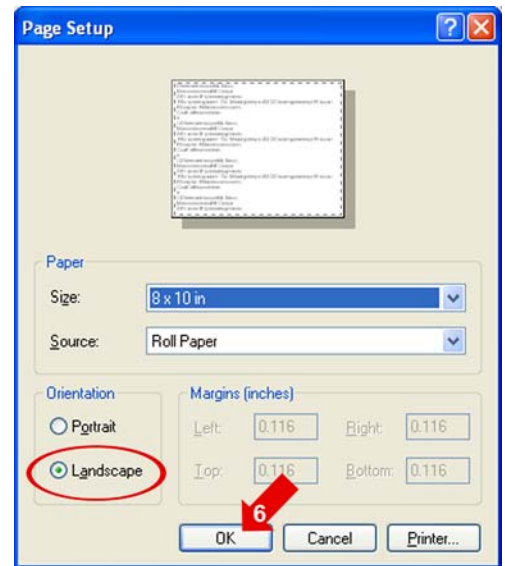
5. Click on the **OK** button to return to Page Setup.



NEXT >

NOTE: Be sure you have the orientation correctly selected. In this case, you should probably select “**Landscape**”.

6. Click on the **OK** button.

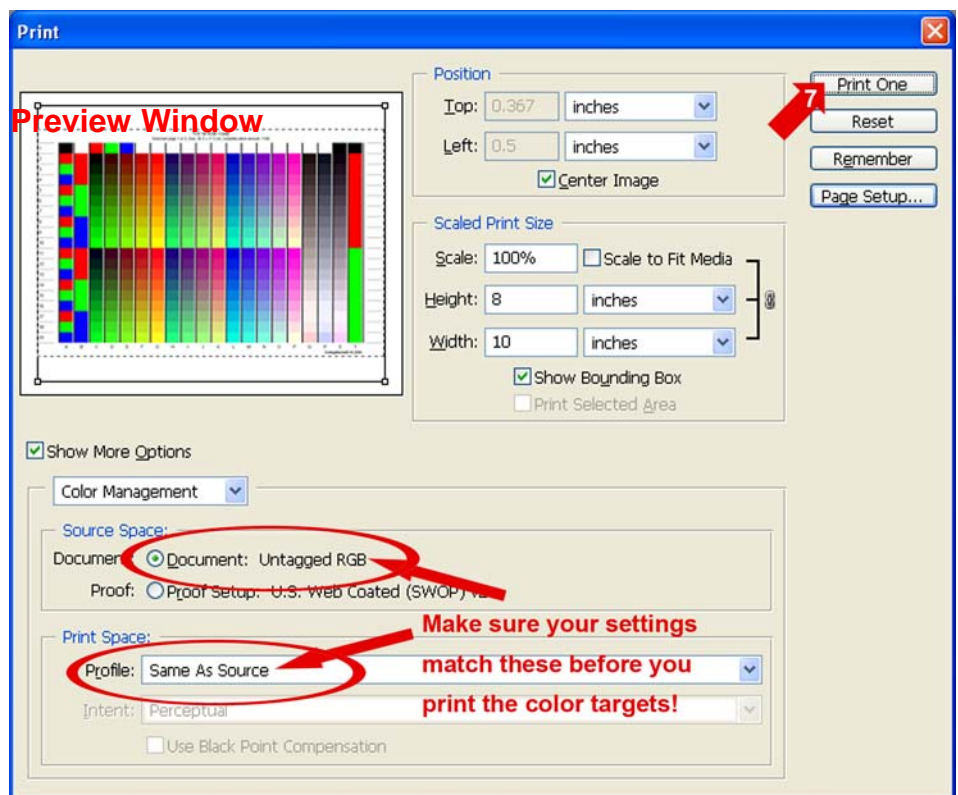


NOTE: Be sure your screen matches the example at the right (applies to all printers). In the **Print Space** section, select **Same as Source** for the Profile.

If you cannot see the entire color target in the Preview Window, click on **Page Setup** and change the **Orientation** (Portrait or Landscape). Click **OK** to return to this window.

7. Click on the **Print** button. Then click **OK** in the next Print Dialog Box.

8. Repeat this procedure for the other two color target images.



Complete the enclosed Order Form on page 2 and mail with your printed targets to:

LOGIX, INC.
ATTN: Custom Printer Profiles
11900 Farmington Rd.
Livonia, MI 48150

If you have any questions or need some help printing these targets, please call LOGIX Tech Support at 1-800-465-6449 or email to support@logix-usa.com.